

Model: BPA-R350-21NB

| | |
|----------------|------------|
| Total Power | 350 Watts |
| Input Voltages | 85-264 VAC |
| Outputs | Dual |



SPECIAL FEATURES

- Active Power Factor Correction
- Wide Range Input
- Redundant operation
- Single wire current sharing
- Diode isolation
- Power good signal
- Power Disable
- Rise time of less than 10 mSec.
- UL, CUL, and DEMKO Approvals
- CE compliant
- **Custom modifications available**

ENVIRONMENTAL SPECIFICATIONS

Humidity: Up to 95% non-condensing

Storage Temperature: -20° to +85°C

Temperature coefficient: ±0.01% / °C

Ambient Operating Temperature: 0 to +50°C continuous duty, full rating. Derate linearly to 50% of full rating at +71°C.

Cooling: Self-contained fan cooling.

SAFETY APPROVALS

UL 60950
 CUL 60950
 DEMKO EN60950

VOLTAGE/CURRENT RATING CHART

| Voltage | Minimum | Maximum | Peak |
|---------|---------|---------|------|
| +5V | 0A | 35A | 35A |
| +12V | 0A | 25A | 35A |

ELECTRICAL SPECIFICATIONS

Input Specifications

Input Range..... 85-264 VAC
 Frequency.....47-63 Hz
 EMI filter..... EN55022 Class B, FCC Part 15
 Inrush Current.....<32A @ 230 VAC
 Input Current..... 5.8 – 1.8A
 Isolation.....4242 VDC (Input to Output)
 Efficiency.....75% @ 120 VAC
 Active PFC.....0.99
 Switching Frequency.....134KHz.

Output Specifications

DC Output.....Maximum continuous output power 350 Watts with self-contained fan cooling.

Line Regulation.....±0.05%

Load Regulation..... ±1% on both outputs

Ripple and Noise.....1% Pk to Pk

Transient Response.....2% Maximum deviation; returns to initial condition in 1 msec max.

300-1 Route 17 South Suite B2
 Lodi, NJ 07644
 Phone: (973) 594-1800 Fax: (973) 594-1804
salesteam@blutekpower.com

Model: BPA-R350-21NB

ELECTRICAL SPECIFICATIONS (CONT')

Output Specifications

Long Term Stability..... 0.01% after 20 minute warm-up.

Hold-Up Time..... 20msec minimum

OVP.....115% to 135% on both outputs. AC must be recycled to restart the unit.

Short-circuit Protection.....Latching method. AC must be recycled to restart the unit.

Overload Protection.....The power supply will shut down when the output power rating exceeds 110% to 130% of maximum rated output current. AC must be recycled to restart the unit.

Diode Isolation..... Internal diode isolation provided for N+1 redundant operation.

Current Sharing.....Outputs will current share within 5% when interconnected by a single wire.

Power Good..... A TTL low logic signal is provided when the output voltages are within normal operating conditions.

Power Disable.....The secondary outputs are enabled only upon mating pin P2-8 to output common on the customer's backplane.

OVERALL MECHANICAL DIMENSIONS

12.46"L x 3.35"H x 2.4"W
(316.4mm x 85mm x 60.96mm)

PIN ASSIGNMENTS

AC Input Connector IEC Inlet

DC Output Connector

P2-1, 2, 13, 14, 15.....+5V

P2-9, 10, 21, 22, 23.....+12V

P2-12.....+12V Current Share

P2-24.....+5V Current Share

P2-8.....Power Disable

P2-11.....Power Good

P2-3,4,5,6,7,16,17,18,19,20..... DC Common

CONNECTOR

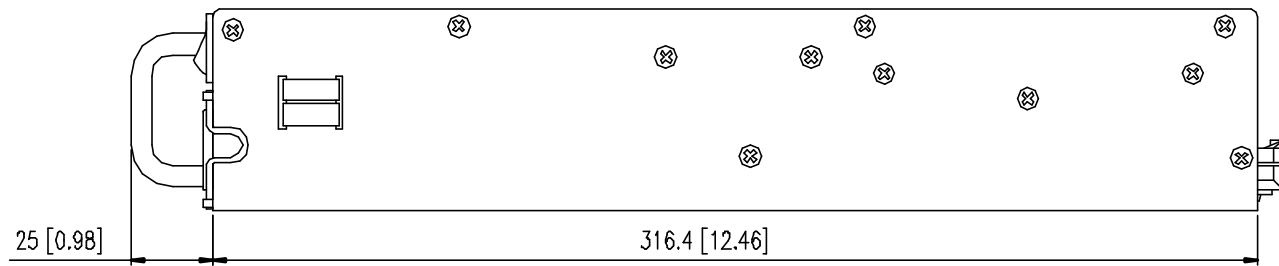
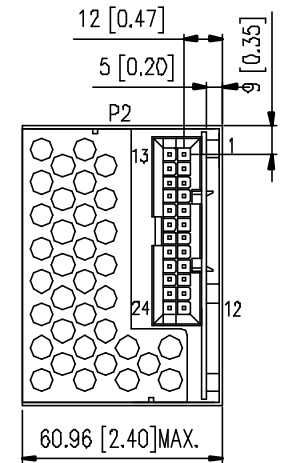
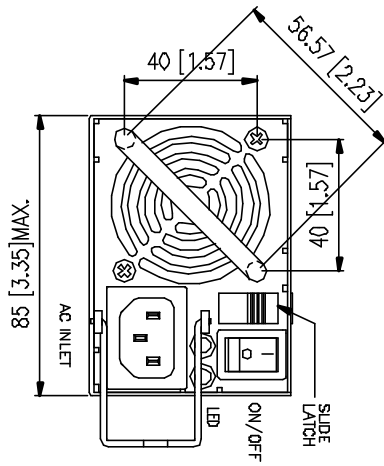
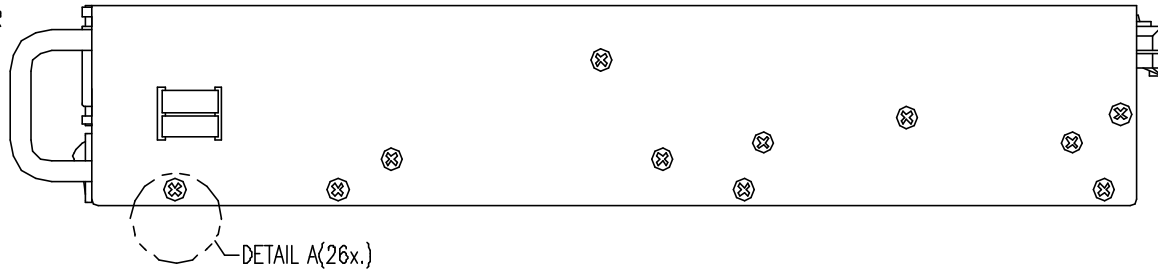
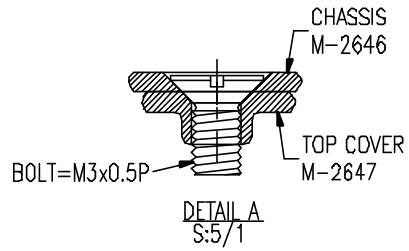
AC input IEC Inlet

DC output Molex 15-24-9244

NOTES

- Specifications subject to change without notice.
- All dimensions in inches/mm
- Warranty: 1 year
- Shipping Weight: 3.45 lbs.

300-1 Route 17 South Suite B2
Lodi, NJ 07644
Phone: (973) 594-1800 Fax: (973) 594-1804
salesteam@blutekpower.com



| | | | |
|---------------------|-----------|-----------------|---------------|
| <i>BluTek Power</i> | | | |
| TITLE | | OUTLINE DRAWING | |
| DRAWN | L. J. HUN | DRG. NO. | BLU-150 |
| CHECKED | | MODEL NO. | BPA-R350-21NB |

| | | | | | | | |
|-------|-------------|----------|---|-------|----------|-------|--------------|
| UNIT | mm [inches] | REV. NO. | A | SCALE | 0.48 : 1 | MAT'L | t= |
| THIRD | ⊕ | | | TOL. | ± 0.2 | DATE | 09. 22. 2005 |



MODEL NO. : BPA-R350-21NB

INPUTS :

| ASSIGNMENT | A.C. VOLTAGE | CURRENT | PIN NBR |
|------------|--------------|---------|---------|
| L: | 100-240 V~ | 5.8A | L |
| N: | | | N |
| GND: | | 50-60Hz | G |

IN/OUTPUT RATING & PIN ASSIGNMENT

OUTPUTS :

| ASSIGNMENT | D.C. VOLTAGE | CURRENT | PIN NBR |
|------------|--------------|--------------|------------------|
| | | <u>PEAK.</u> | |
| V01: | +5V --- | 35 A | P2-1,2,13,14,15 |
| V02: | +12V --- | 25 A 30A | P2-9,10,21,22,23 |
| DC COM: | | | P2-3~7,16~20 |
| P.D.: | | | P2-8 |
| P.G.: | | | P2-11 |
| 12VCS: | | | P2-12 |
| 5VCS: | | | P2-24 |

MAXIMUM OUTPUT POWER: 350W

| | |
|-------------------------|--------------------------|
| SIZE : A4 | FM-4000-34/REV.A-080502' |
| UNIT :mm[inches] | FILENAME: PPSC0399 |
| REV. NO.: A | DATE : 11. 03. 2004 |
| DRAWN: 洪麗珍 L. J. Hun | CHECKED: |

