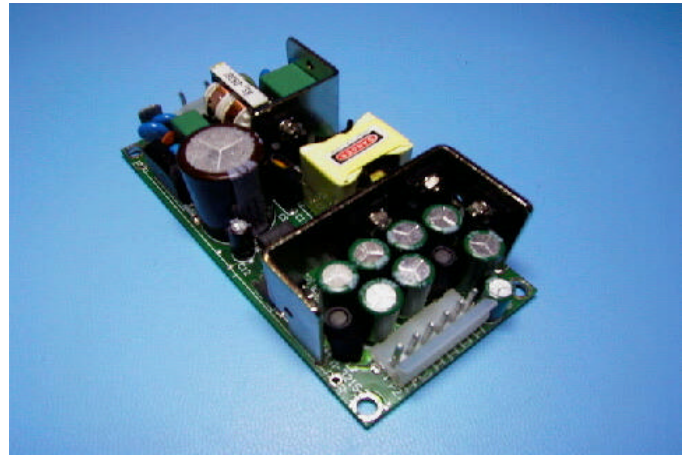


**Model: BPN-40-Series**

Total Power	40 Watts
Input Voltages	90-264 VAC
Outputs	Single, Dual and Triple



**SPECIAL FEATURES**

- Wide Range Input
- UL, CUL, CB scheme and Demko approved.
- CE compliant
- Custom Modifications available

**ENVIRONMENTAL SPECIFICATIONS**

Humidity: Up to 95% non-condensing

Storage Temperature: -20° to +85°C

Temperature coefficient: ±0.01% / °C

Ambient Operating Temperature: 0 to +50°C continuous duty, full rating. Derate linearly to 50% of full rating at +71°C.

Cooling: Convection cooled, but 5-CFM air circulation recommended.

**SAFETY APPROVALS**

UL	60950
CUL	60950
DEMKO	EN60950

**ELECTRICAL SPECIFICATIONS**

**Input Specifications**

Input Range.....	90-264 VAC
Frequency.....	47-63 Hz
EMI filter.....	EN55022 Class B, FCC Part 15
Inrush Current.....	≤32A @ 230 VAC
Input Current.....	1.1A - 0.2A
Isolation.....	4242 VDC (Input to Output)
Efficiency.....	Typically 78% @ 120 VAC
Switching Frequency.....	90 KHz.

**Output Specifications**

DC Output.....Maximum continuous output power 30 Watts convection cooled, 40 watt with 5-CFM air-cooling.

Line Regulation.....±0.3%

Load Regulation.....±1% on single output versions, ±3.0% on main output and ±5.0% on auxiliary outputs on dual and triple output versions.

Ripple and Noise.....1% Pk to Pk

Transient Response.....2% Maximum deviation; returns to initial condition in 1 msec max.

Long Term Stability.....0.01% after 20 minute warm-up.

Hold-Up Time.....6msec @ 115 VAC

OVP.....115% to 135% on main output only.

300-1 Route 17 South Suite B2  
 Lodi, NJ 07644  
 Phone: (973) 594-1800 Fax: (973) 594-1804  
[salesteam@blutekpower.com](mailto:salesteam@blutekpower.com)

## Model: BPN-40-Series

### ELECTRICAL SPECIFICATIONS (CONT')

#### Output Specifications

Short-circuit Protection.....The units will withstand a continuous short without damage. It will automatically return to regulation upon removal of the short.

Overload Protection.....The overload protection feature will reduce all output voltages to a safe dissipation level when the output power rating exceeds 125% of maximum rated power. The unit will automatically return to regulation upon removal of the overload.

### OVERALL MECHANICAL DIMENSIONS

PCB Only  
4.0"L x 2.0"W x 1.08"H  
(101.6mm L X 50.8mm W x 27.6mm H)

### PIN ASSIGNMENTS

Consult factory

### CONNECTOR

AC input - Molex P/N 09-65-2038  
Ground – Spade connector 0.25  
Output – Molex P/N09-65-2068

### VOLTAGE/CURRENT RATING CHARTS

#### Single Output\* – Model Selection Chart

Model No.	Voltage	Convection	5-cfm air
BPN-40-12	3.3V	9A	12A
BPN-40-13	5V	6A	8A
BPN-40-14	12V	2.5A	3.3A
BPN-40-15	15V	2A	2.7A
BPN-40-16	24V	1.3A	1.7A
BPN-40-17	28V	1.07A	1.43A
BPN-40-18	36V	0.83A	1.1A
BPN-40-19	48V	0.63A	0.83A

#### Dual Output \* – Model Selection Chart

Model No.	Voltage	Amperage	Voltage	Amperage
BPN-40-223	+3.3V	6A	+5V	3A
BPN-40-224	+3.3V	6A	+12V	2A
BPN-40-225	+3.3V	6A	+15V	1.6A
BPN-40-226	+3.3V	6A	+24V	1A
BPN-40-234	+5V	6A	+12V	2A
BPN-40-235	+5V	6A	+15V	1.6A
BPN-40-236	+5V	6A	+24V	1A

*Above chart represents a small sample of agency approved voltage combinations available.*

**\*Total maximum output power - Convection Cooled - 30 watts  
With 5 CFM fan cooling – 40 watts**

300-1 Route 17 South Suite B2  
Lodi, NJ 07644  
Phone: (973) 594-1800 Fax: (973) 594-1804  
[salesteam@blutekpower.com](mailto:salesteam@blutekpower.com)

## Model: BPN-40-Series

### VOLTAGE/CURRENT RATING CHARTS

#### Triple Output\* – Model Selection Chart

<b>Model No.</b>	<b>Voltage</b>	<b>Amperage</b>	<b>Voltage</b>	<b>Amperage</b>	<b>Voltage</b>	<b>Amperage</b>
BPN-40-3234	+3.3V	6A	+5V	3A	-12V	0.5A
BPN-40-3244	+3.3V	6A	+12V	2A	-12V	0.5A
BPN-40-3255	+3.3V	6A	+15V	1.6A	-15V	0.4A
BPN-40-3342	+5V	6A	+12V	2A	-5V	0.5A
BPN-40-3344	+5V	6A	+12V	2A	-12V	0.5A
BPN-40-3355	+5V	6A	+15V	1.6A	-15V	0.4A
BPN-40-3364	+5V	6A	+24V	1A	-12V	0.5A

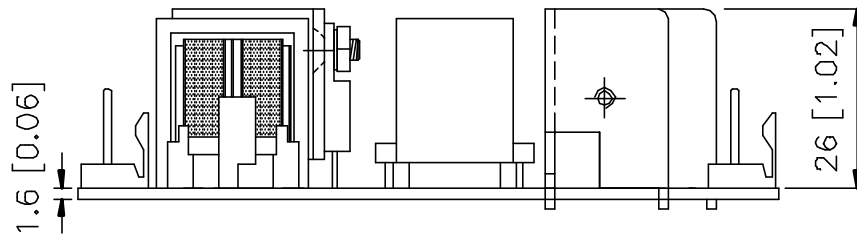
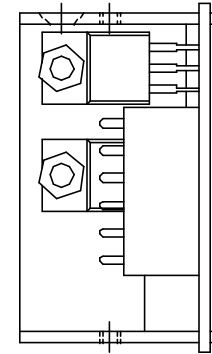
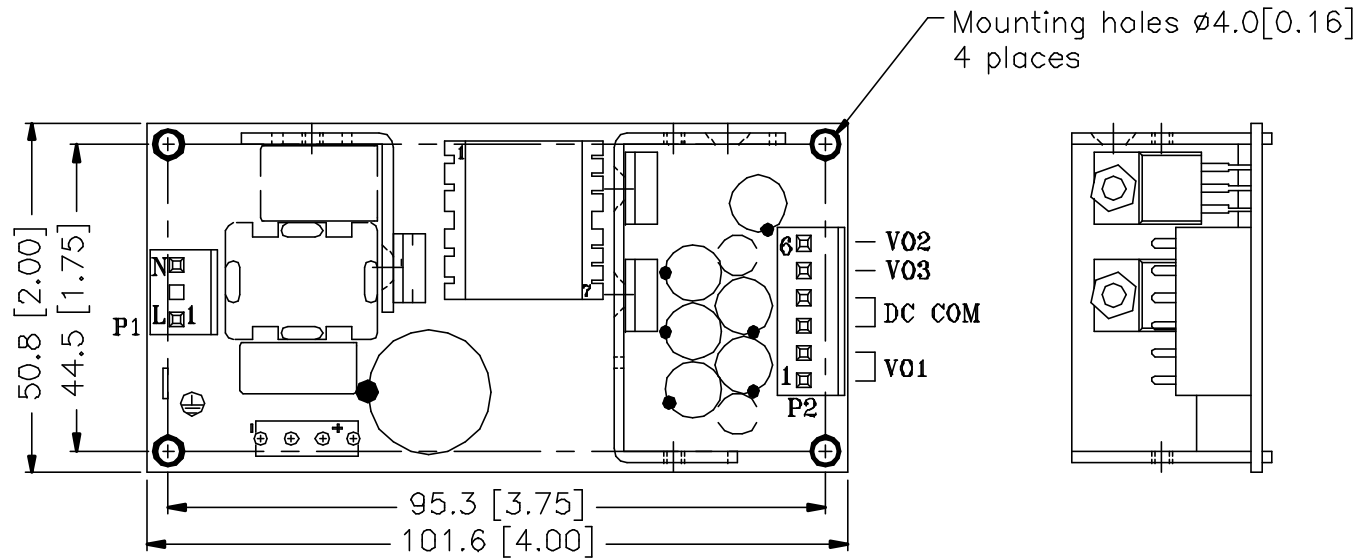
*Above chart represents a small sample of agency approved voltage combinations available.*

**\*Total maximum output power - Convection Cooled - 30 watts  
With 5 CFM fan cooling – 40 watts**

#### NOTES

- Specifications subject to change without notice.
- All dimensions in inches/mm
- Warranty: 1 year
- Weight: 0.4 lbs.

300-1 Route 17 South Suite B2  
Lodi, NJ 07644  
Phone: (973) 594-1800 Fax: (973) 594-1804  
[salesteam@blutekpower.com](mailto:salesteam@blutekpower.com)



<i>BluTek Power</i>			
TITLE		P.C.B OUTLINE DRAWING	
DRAWN	L. J. HUN	DRG. NO.	BLU-160
CHECKED		MODEL NO.	BPN-40 series

UNIT	mm[inches]	REV. NO.	A	SCALE	1 : 1	MAT'L	t=
THIRD	$\oplus$	$\ominus$		TOL.	$\pm 0.2$	DATE	12. 02. 2005